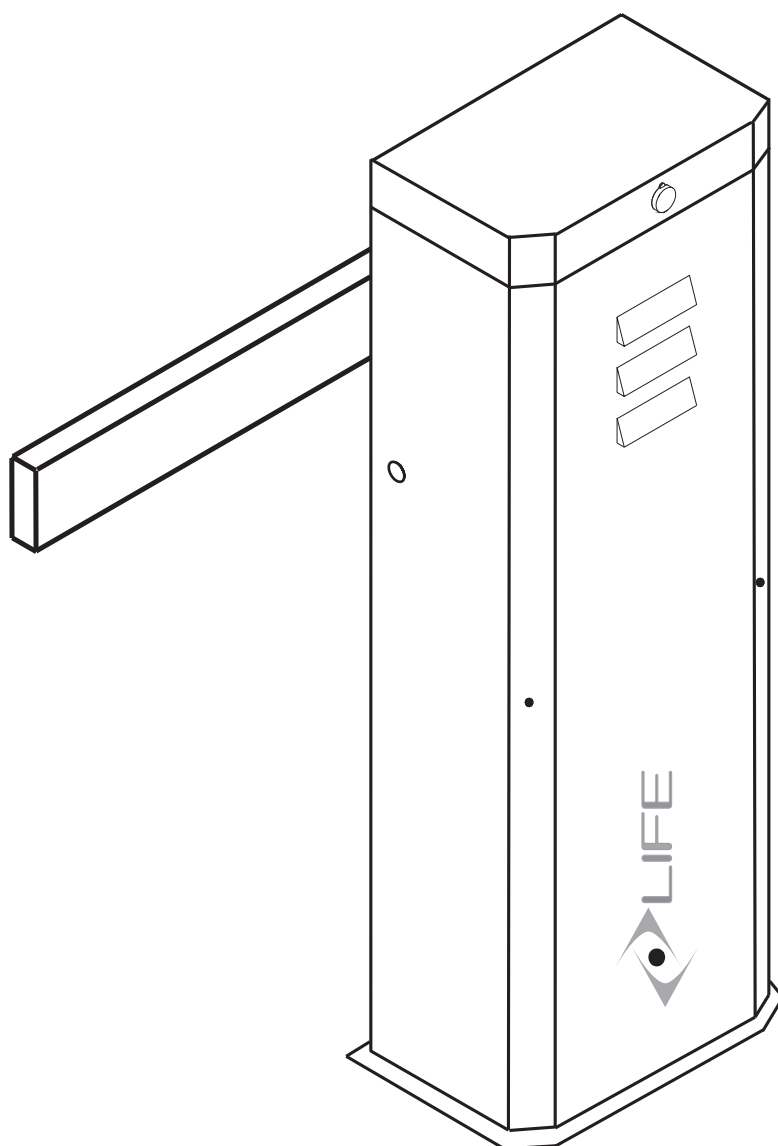


SUPRA M B

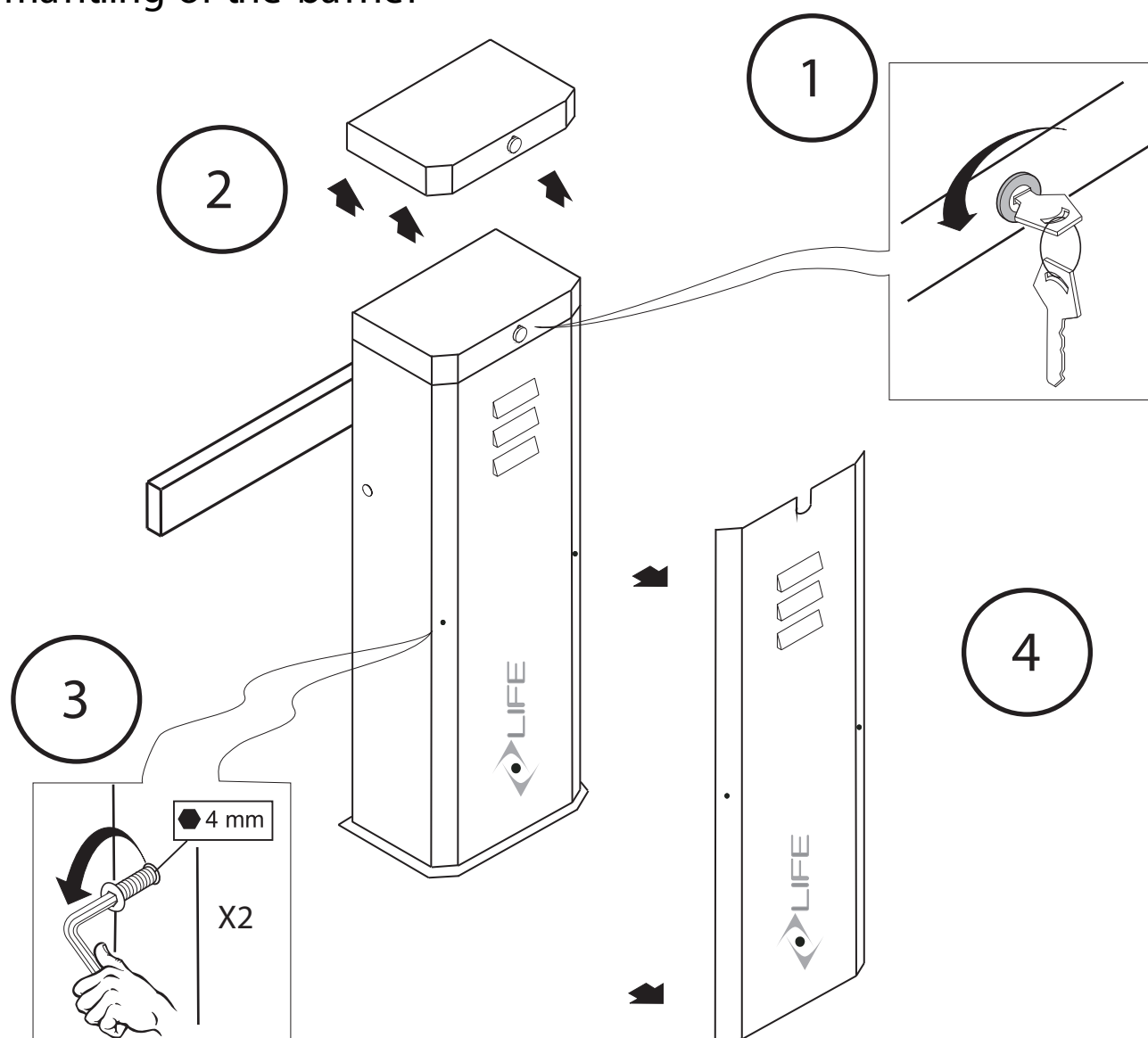
GB

ROAD BARRIER 24Vdc

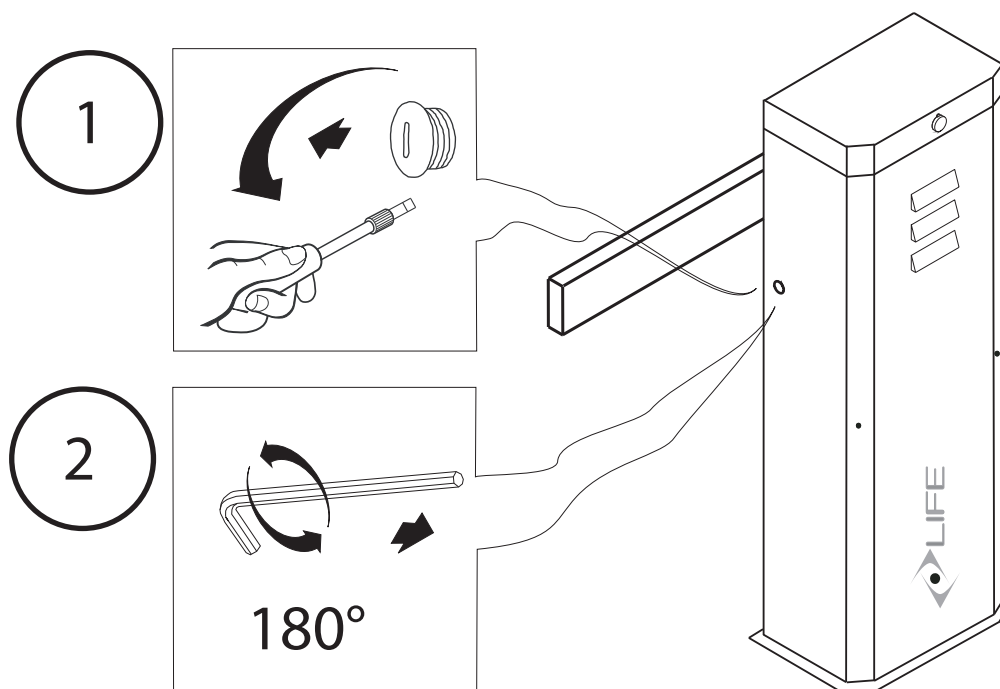
INSTRUCTION AND ADVERTISING FOR USE AND MAINTENANCE



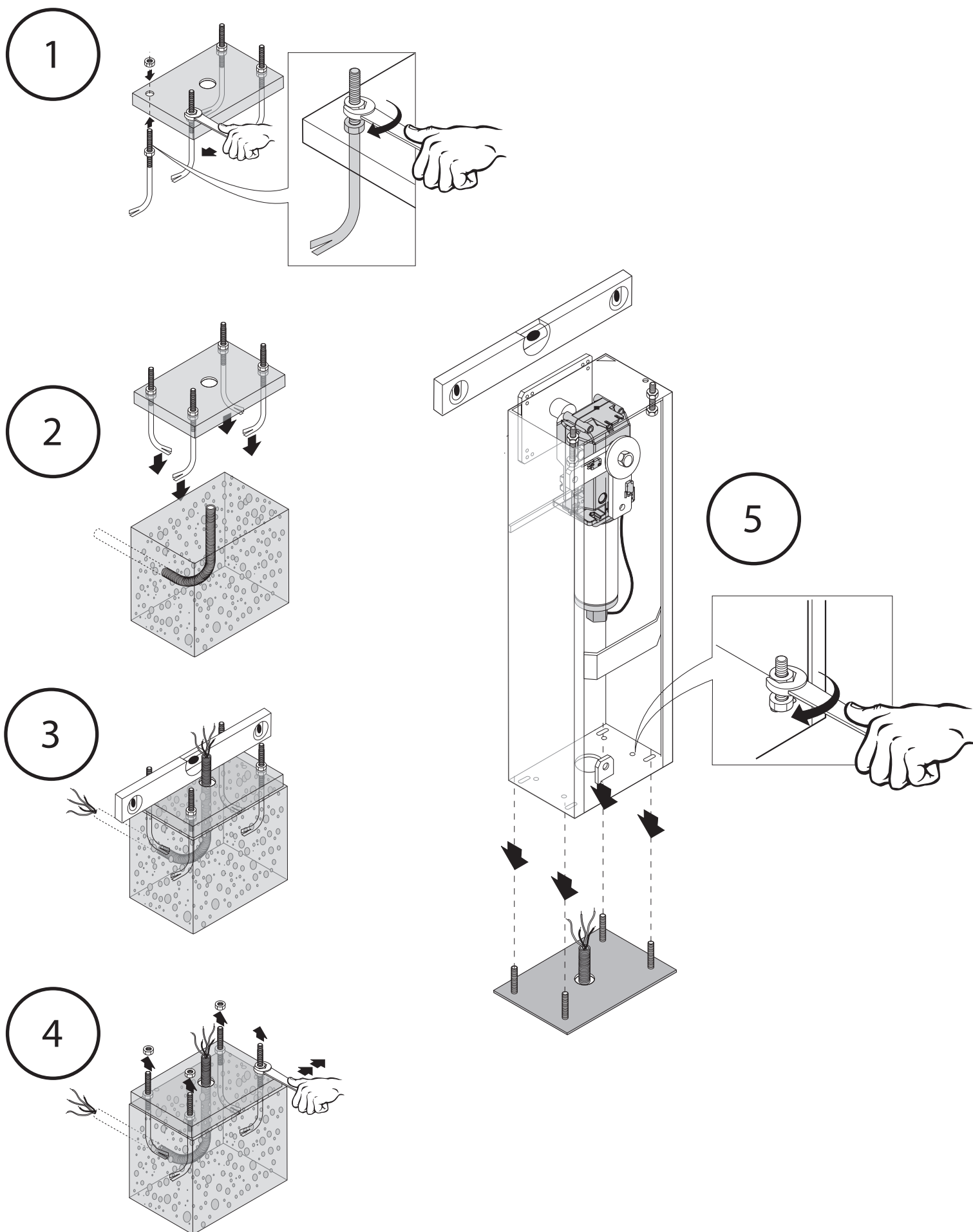
1- Dismantling of the barrier



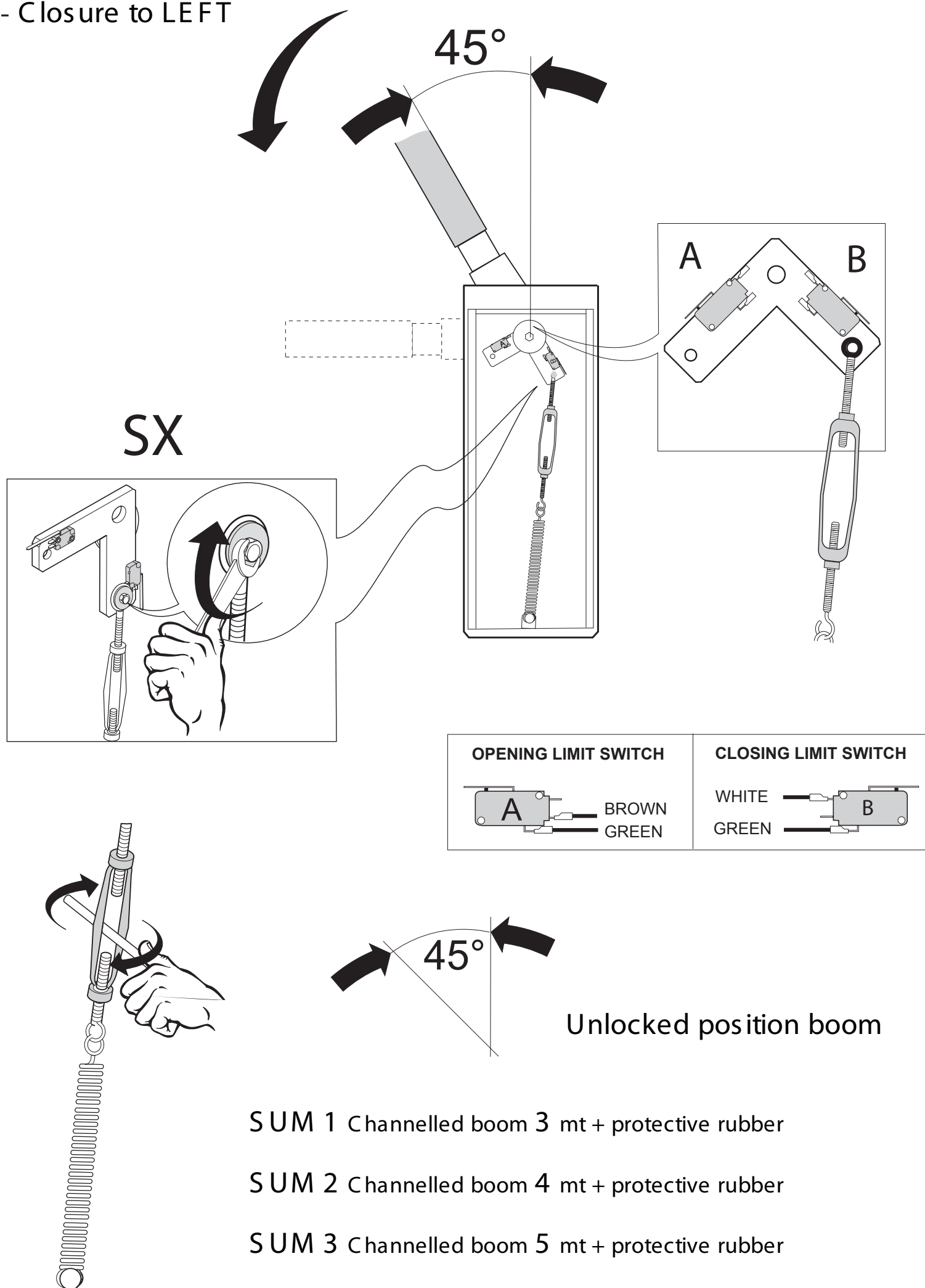
2- Manual release



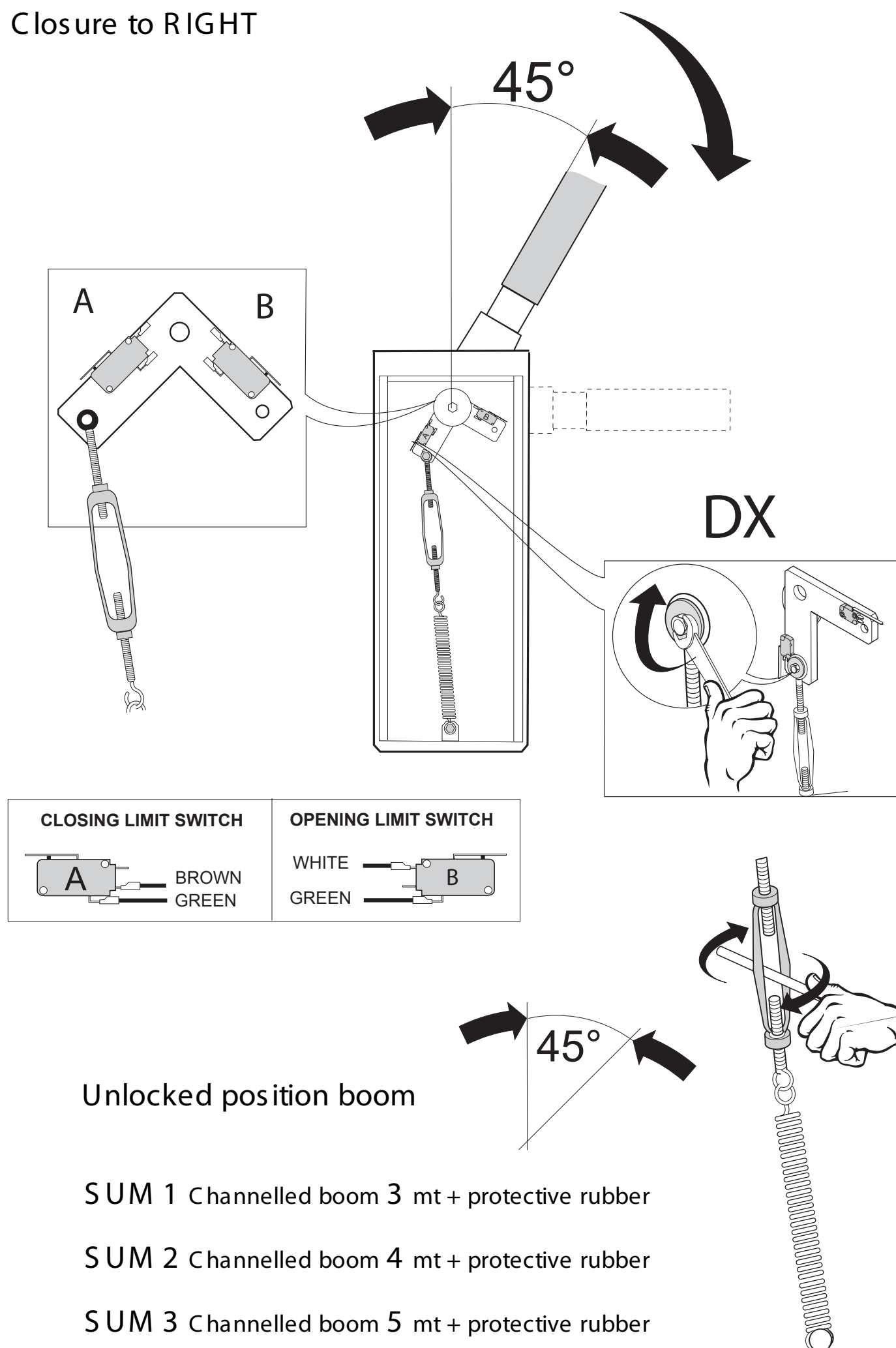
3 - Fixing on the ground with base sole (**SUE 1**)



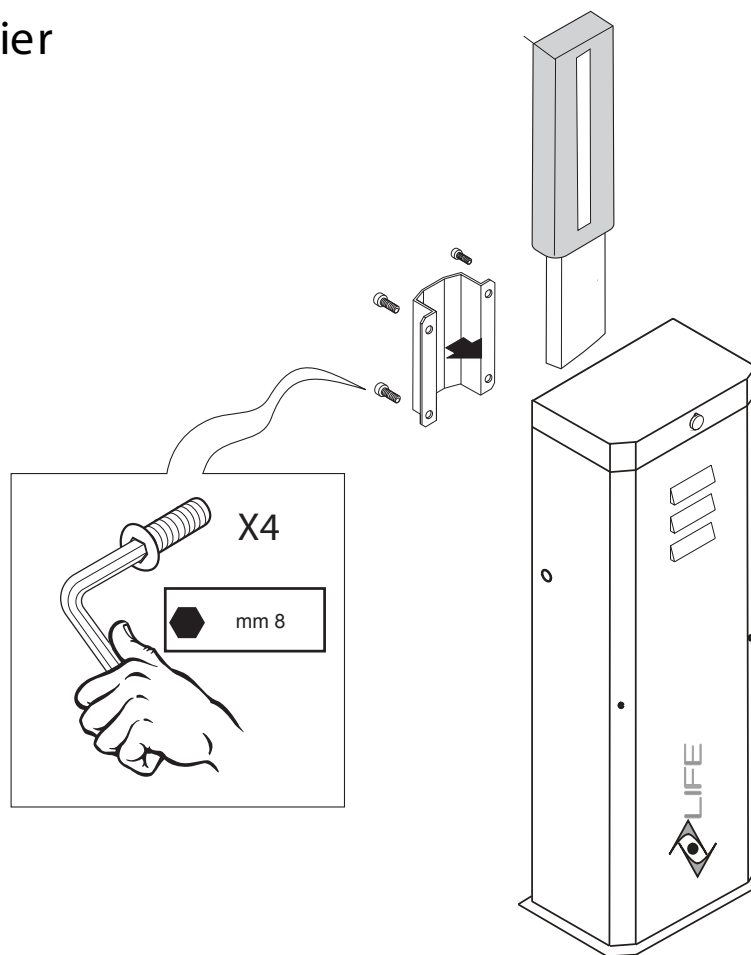
4 - Closure to LEFT



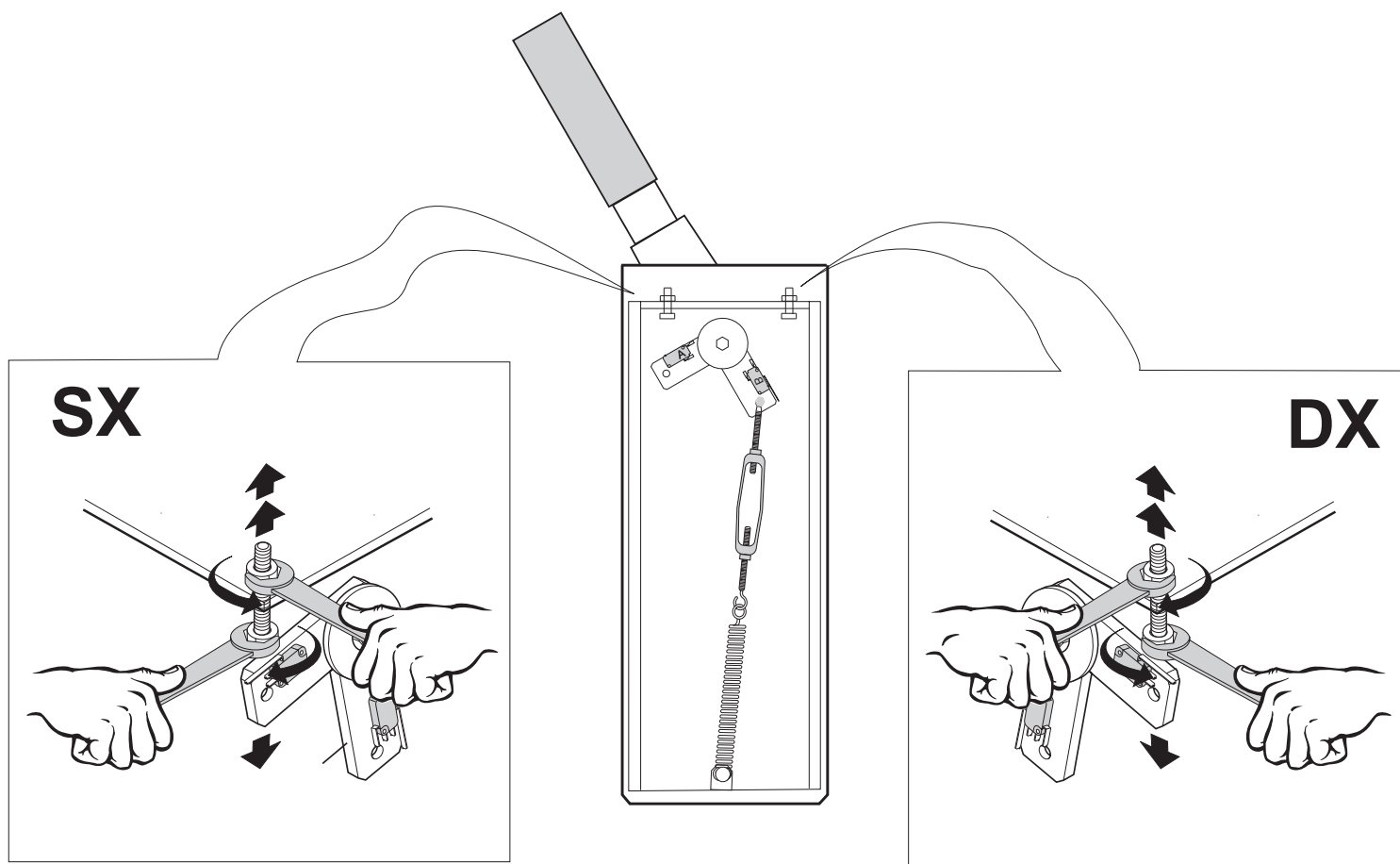
5 - Closure to RIGHT



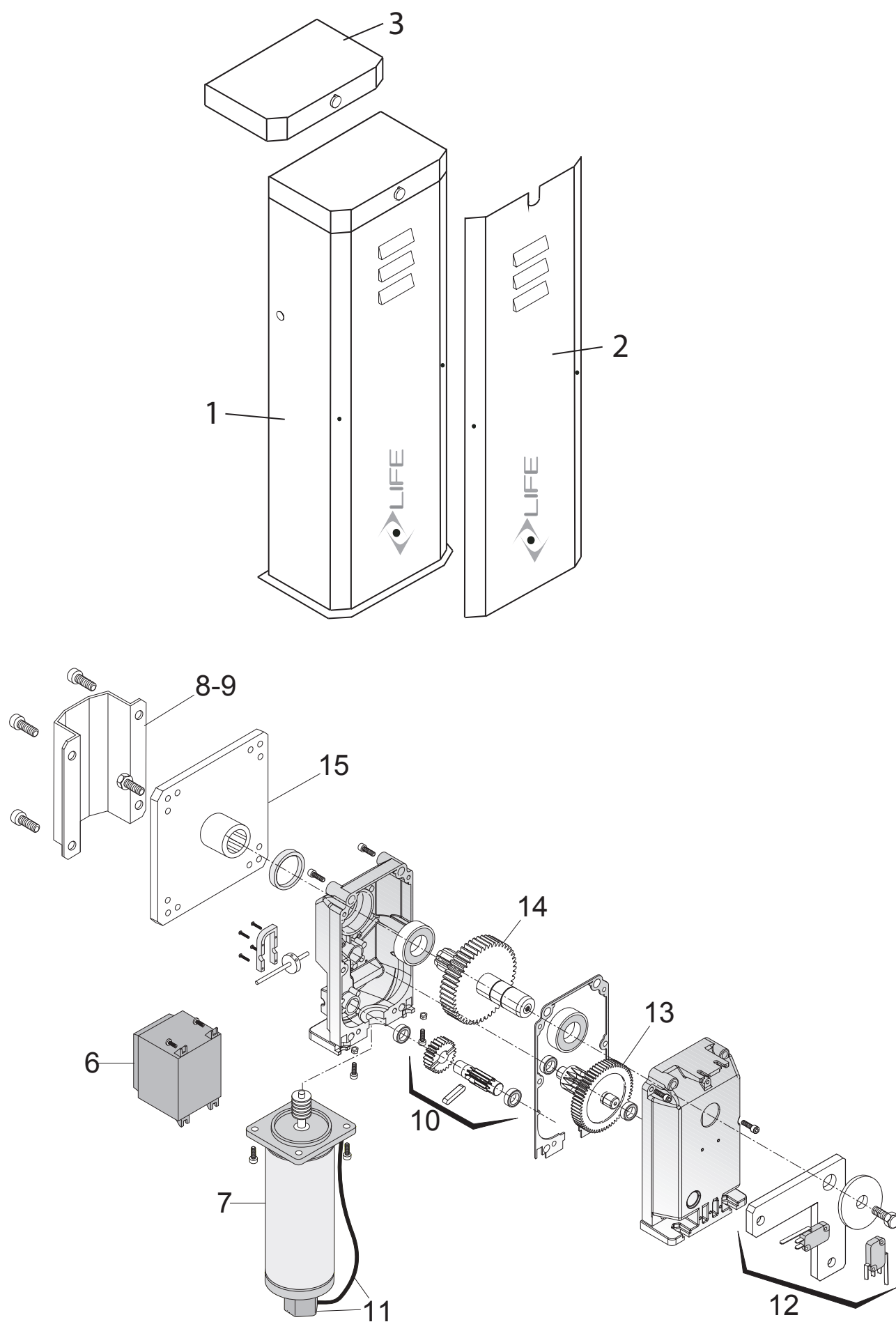
5 - Assembly boom barrier



6 - Mechanical stops adjustment



7 - Mechanical drawings



CE APPROVAL DECLARATION

CONFORMITY DECLARATION



According to 98/37/CE regulation, attachment II, part B (manufacture CE Conformity declaration)

LIFE home integration
Via Sandro Pertini, 3/5
31014 COLLE UMBERTO (TV) – Italia

Hereby declares that the following product:

Automation for barrier

SUPRA MB

Applies to the essential requirements of the following regulations:

- Machine 98/37/CE (ex89/392/CEE) & following amendments
- Low tension 73/23/CEE & following amendments
- Electromagnetic Compatibility 89/336/CEE & following amendments

Is conformed as required by the following regulations

- EN 12445:2000 Industrial, commercial & warehouse gates & doors - Safety in motorised use – Test methods
- EN 12453: Industrial, commercial & warehouse gates & doors - Safety in motorised use – Requirements
- EN 60204 – 1:1997 Machine safety – Machine electrical equipment – Part 1: general rules.

Furthermore declares that set up of the above mentioned incorporated components is not allowed, until the installation is declared conform to regulation 98/37/CE.

COLLE UMBERTO

Name of bearer:

Michele Rui

Qualified as:

PRESIDENT

Firma:



Address: Via Sandro Pertini, 3/5 31014 COLLE UMBERTO (TV) Italia

Telephone: + 39 0438 388592
Telefax: + 39 0438 388593
http: www.homelife.it
e-mail: info@homelife.it

