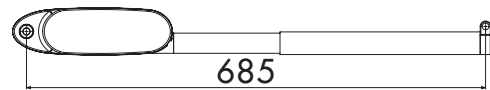
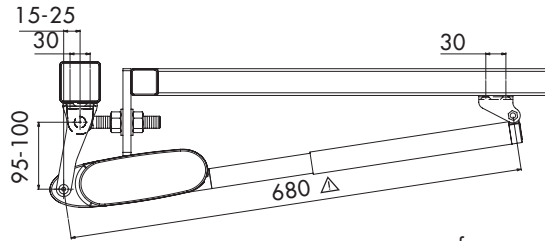


## INSTALLATION SITUATIONS

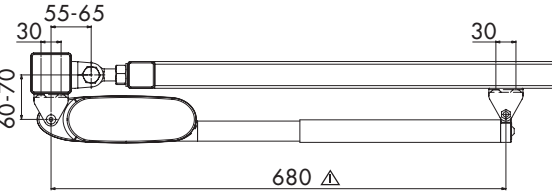


Sit.  
(A)



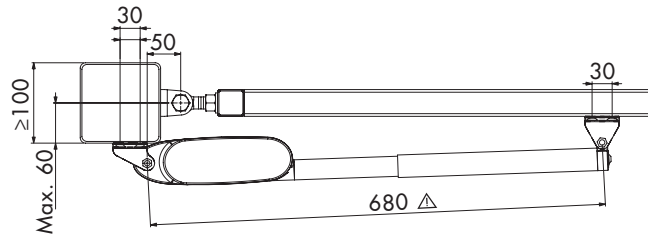
or ou of oder

Sit.  
(B)



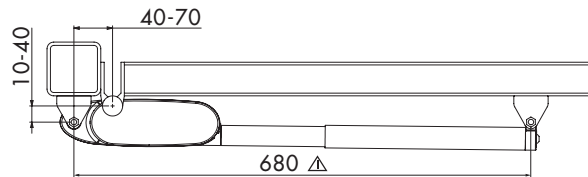
or ou of oder

Sit.  
(C)



or ou of oder

Sit.  
(D)



• If you don't want a freerun for example if used with the magnetic locks, you have to adjust the pretension to 675 mm instead of 680 mm.

- Pour supprimer l'à-coup final pour une utilisation avec des ventouses électromagnétiques par exemple, vous devez ajuster le ferme-porte à 675 mm au lieu de 680 mm.
- Indien U geen eindslag wenst bv. bij gebruik met de magneetsloten, moet de voorspanning aangepast worden naar 675 mm ipv 680 mm
- Wenn Sie keinen Ends Schlag haben möchten, zB bei Verwendung von Magnetschlössern, sollen Sie den Türschliesser auf 675mm statt 680mm befestigen.

**LOCINOX**  
WWW.LOCINOX.COM

Doc. Nr.:  
**MANU-000024**

Locinox nv • Mannebeekstraat 21  
B-8790 Waregem • Belgium - Europe  
Tel. +32 (0)56 77 27 66 • Fax. +32 (0)56 77 69 26  
E-mail: locinox@locinox.com

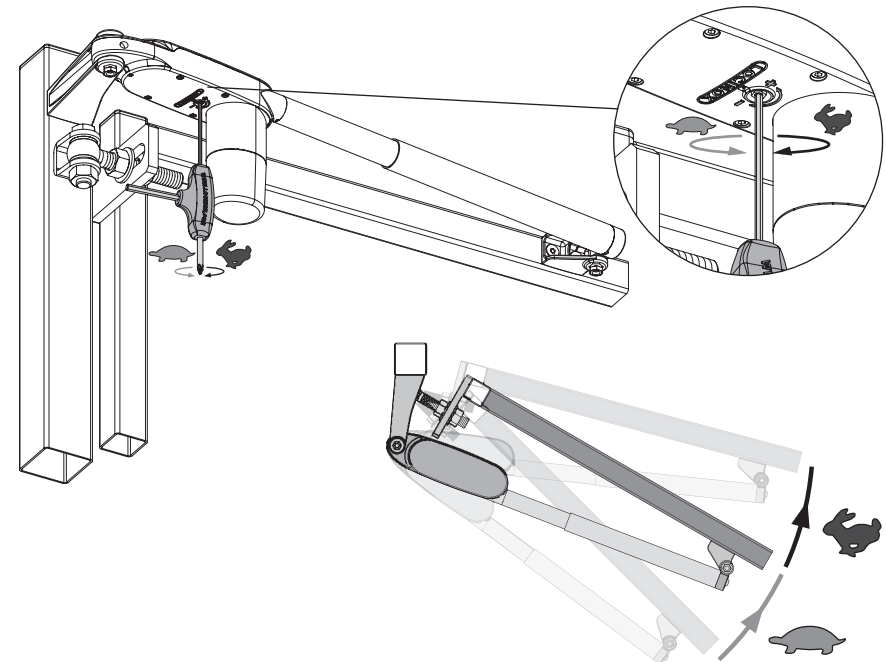
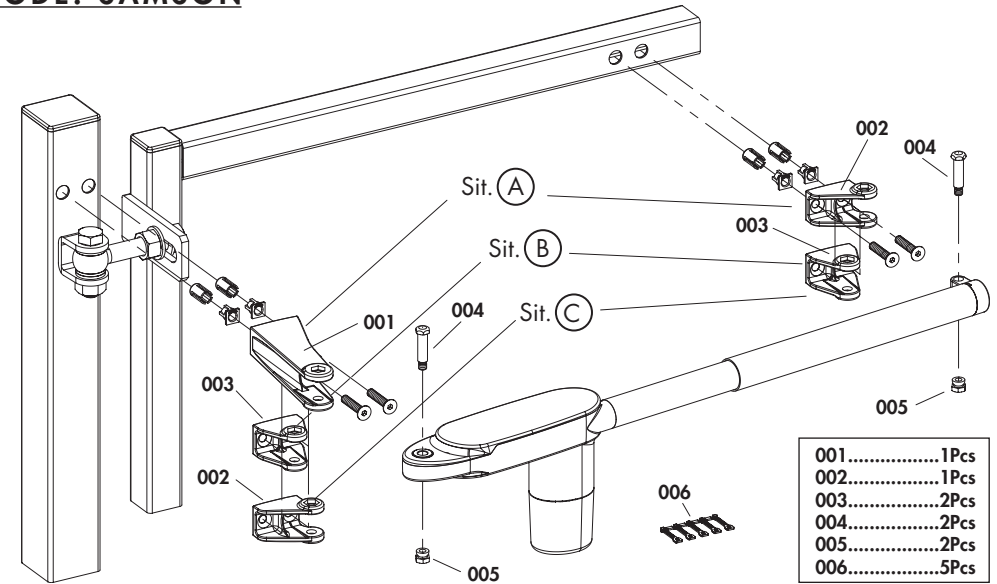


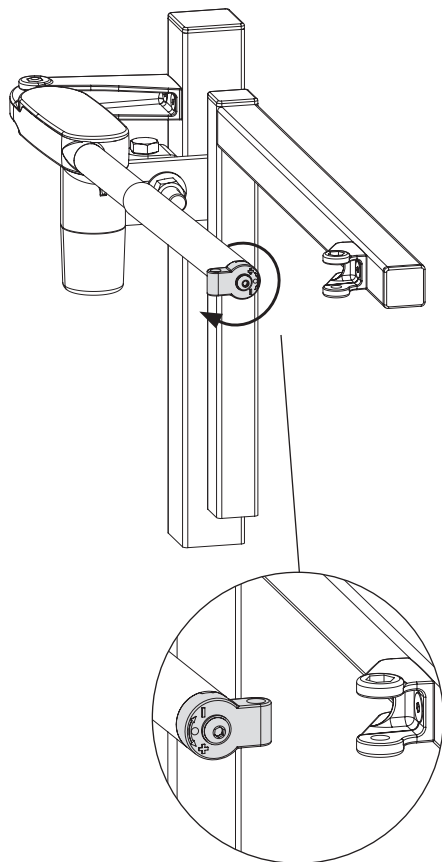
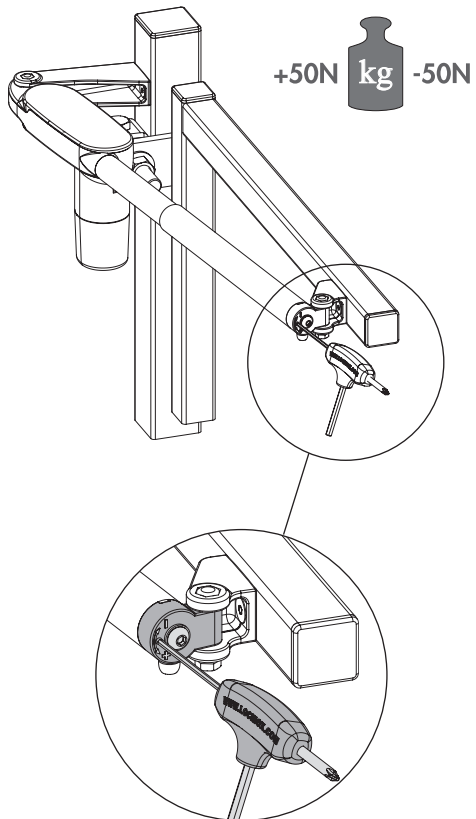
\* M A N U - 0 0 0 0 2 4 \*

**LOCINOX**<sup>®</sup>

WWW.LOCINOX.COM

## CODE: SAMSON





## INSTALLATION INSTRUCTIONS

